

DELAWARE RACIAL JUSTICE COLLABORATIVE & EQUITY COUNTS DATA CENTER

Building Data Capacity Through a Racial Justice Lens

Presented by Raina Allen and Emily Kauffman



HEALTH EQUITY (advocacy)

- More \$ for Bureau on Health Equity
- Ask DMMA to engage community coalitions re: Medicaid reup
- Support HB 80 (doula care)

PUBLIC POLICY

- Voter Voice tracking & letters
- Probation reform Real Talk
- Support SB 43 HT awareness
- Tracking HB 198 implementation

EDUCATION

- Black Student Summit 4/22, 3/23

DIVERSITY, EQUITY & INCLUSION

- Racial Equity Challenge (4x/year)
- DEI online toolkit
- Fusion Alliance
- Pitch or Ditch contest
- Equity Counts Data Center



DRJC MISSION

To **Eliminate** Policies and Practices that Enable **Systemic Racism** and Replace Them with Those That Are More Equitable for All





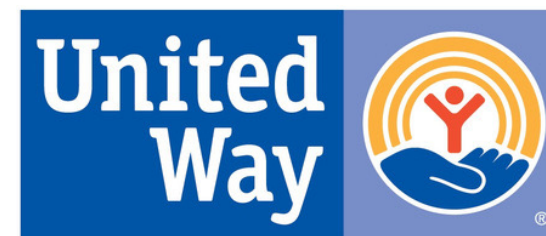
Background

Equity Counts Data Center

Collaboratively designed with goal to help communities, organizations, researchers, and policymakers understand and promote racial equity and social justice.



DELAWARE HEALTH AND SOCIAL SERVICES
Division of Public Health



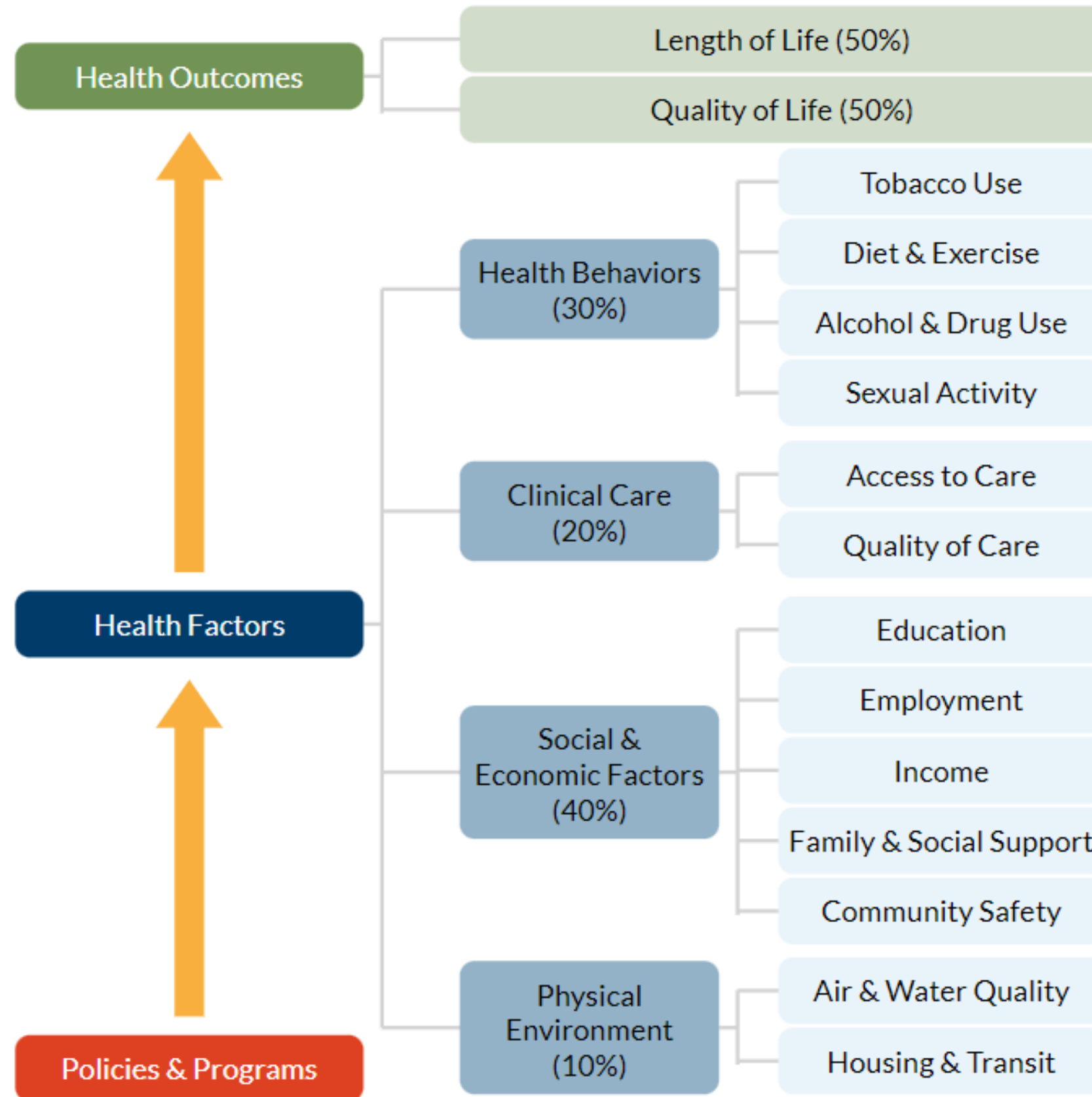
United Way of Delaware



Green River

Social Determinants of Health

County Health Rankings Model



50% can be traced back to ZIP Code

HEALTH

- Preventative Healthcare
- Chronic Disease and Health Outcomes
- Adverse Childhood Experiences
- COVID-19 Statistics

EDUCATION

- Student Suspensions and Expulsions
- Student Performance Assessment
- Student Enrollment and Graduation Rates

CRIMINAL JUSTICE

- Student Risk Factors

WEALTH CREATION

- Employment
- Income and Poverty
- Housing
- Benefits
- Area Deprivation Index

PILLARS OF EQUITY



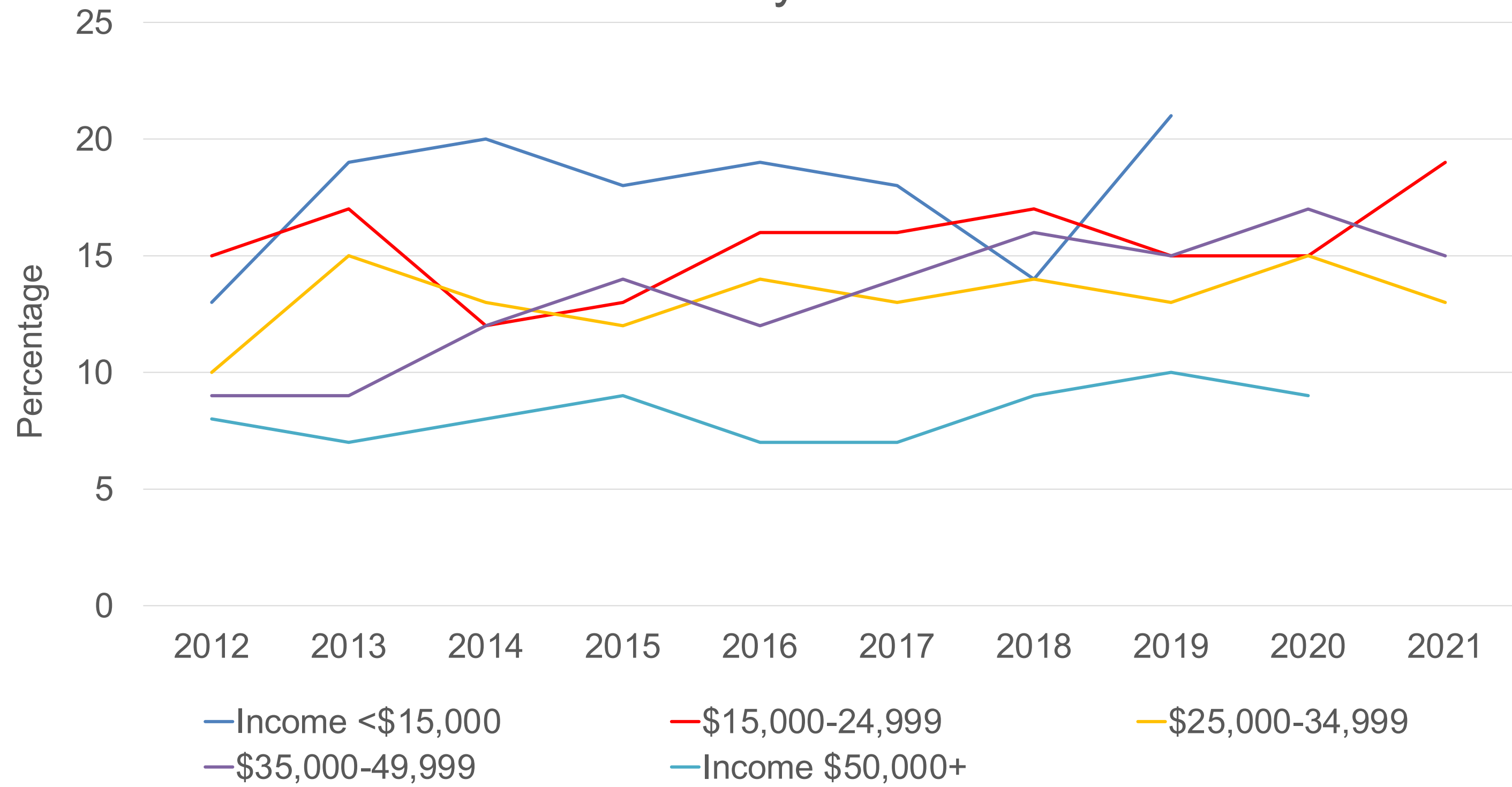
Data Example

Diabetes in Delaware: Background

- Chronic Disease
- Preventable and treatable through healthy lifestyle behaviors and health care interventions.
- Untreated can lead to heart disease, stroke, amputation, end-stage kidney disease, blindness, and death.

- Delaware's diabetes prevalence rose from 8% to 13% from 2003-2019.
- Diabetes costs Delaware \$1.1 billion each year.

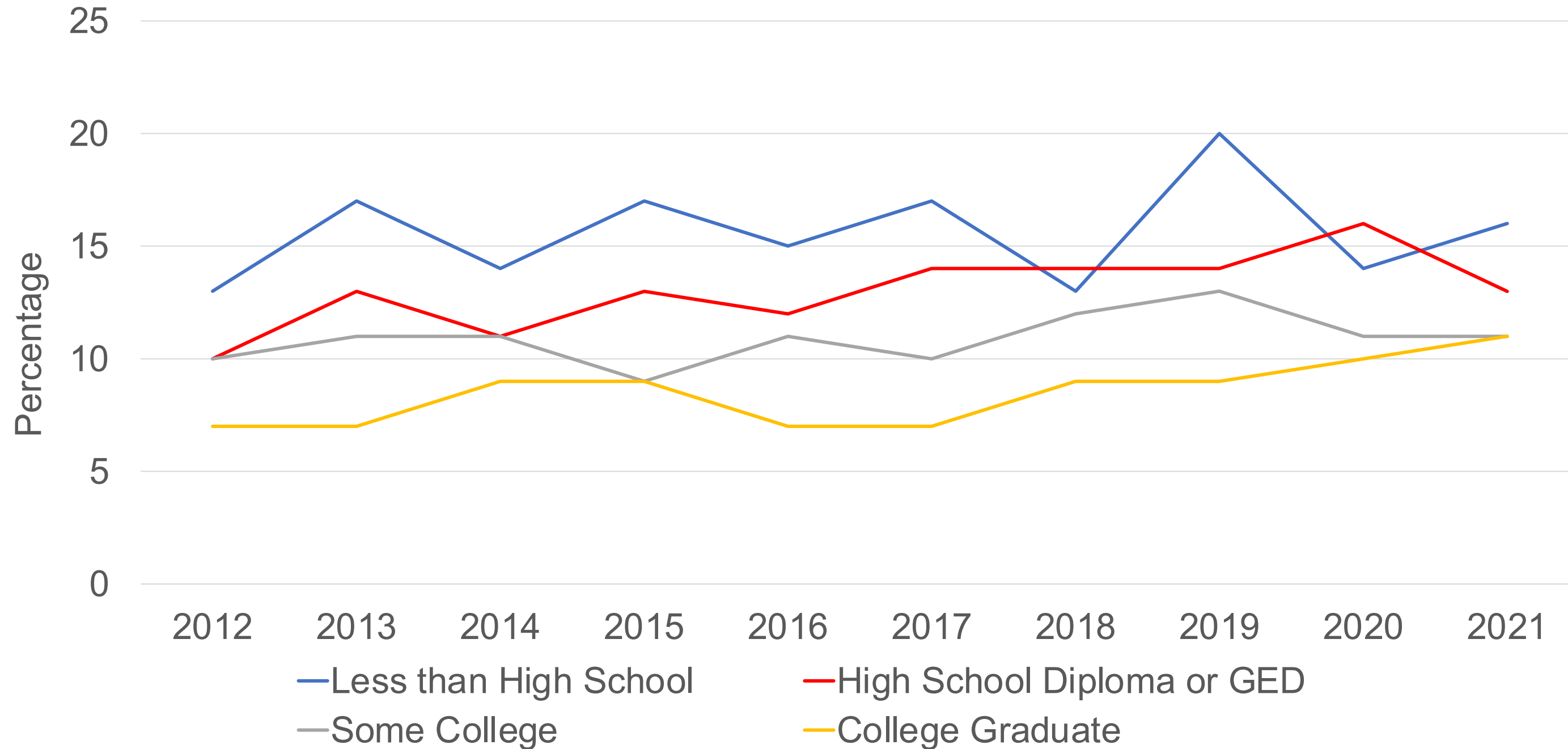
Diabetes Prevalence by Income in Delaware



Source: Behavioral Risk Factor Surveillance System (BRFSS)

Note: Diabetes Prevalence is the proportion of respondents aged ≥ 18 years who report ever been told by a doctor or other health professional that they have diabetes other than diabetes during pregnancy.

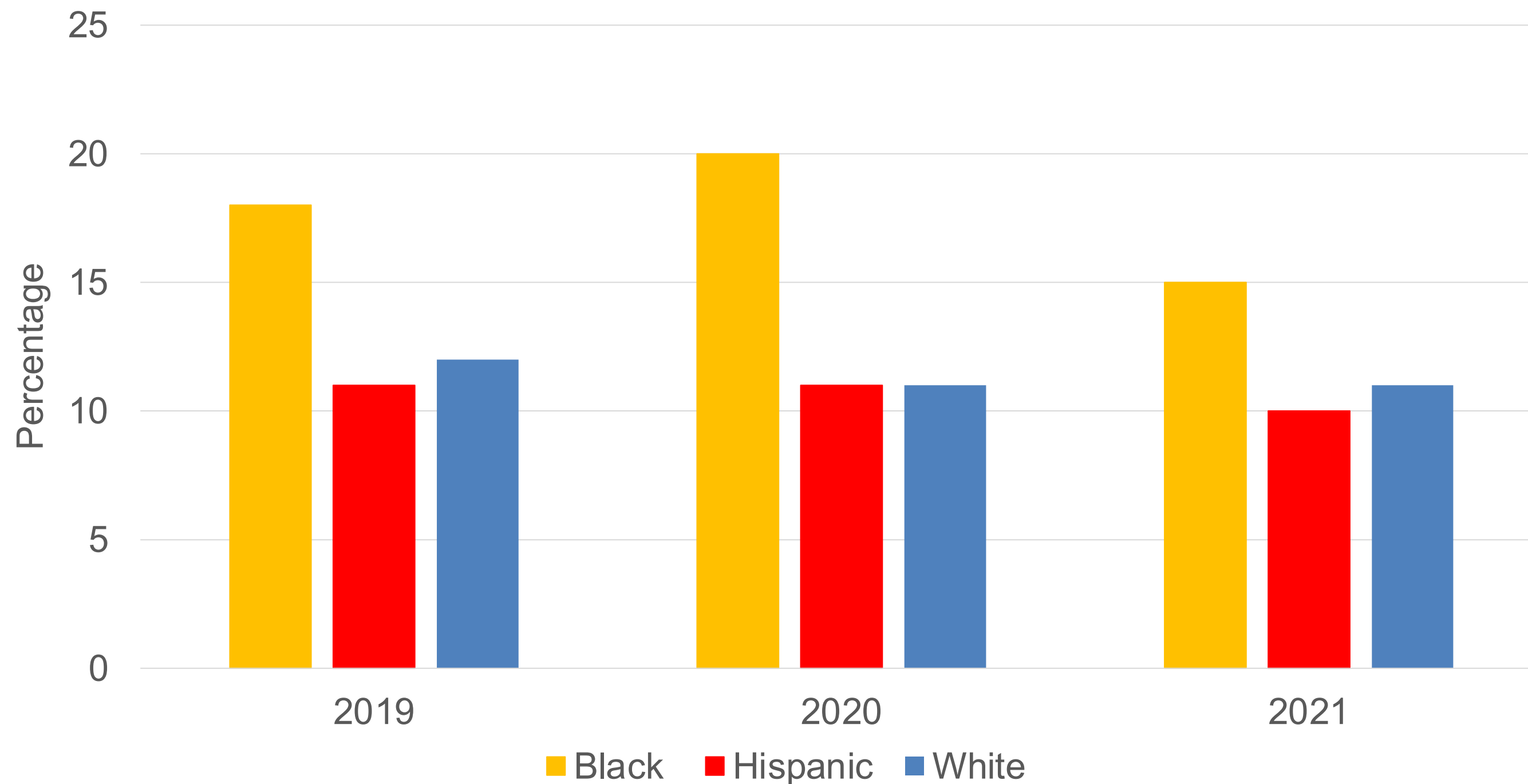
Diabetes Prevalence by Educational Attainment in Delaware



Source: Behavioral Risk Factor Surveillance System (BRFSS)

Note: Diabetes Prevalence is the proportion of respondents aged ≥ 18 years who report ever been told by a doctor or other health professional that they have diabetes other than diabetes during pregnancy.

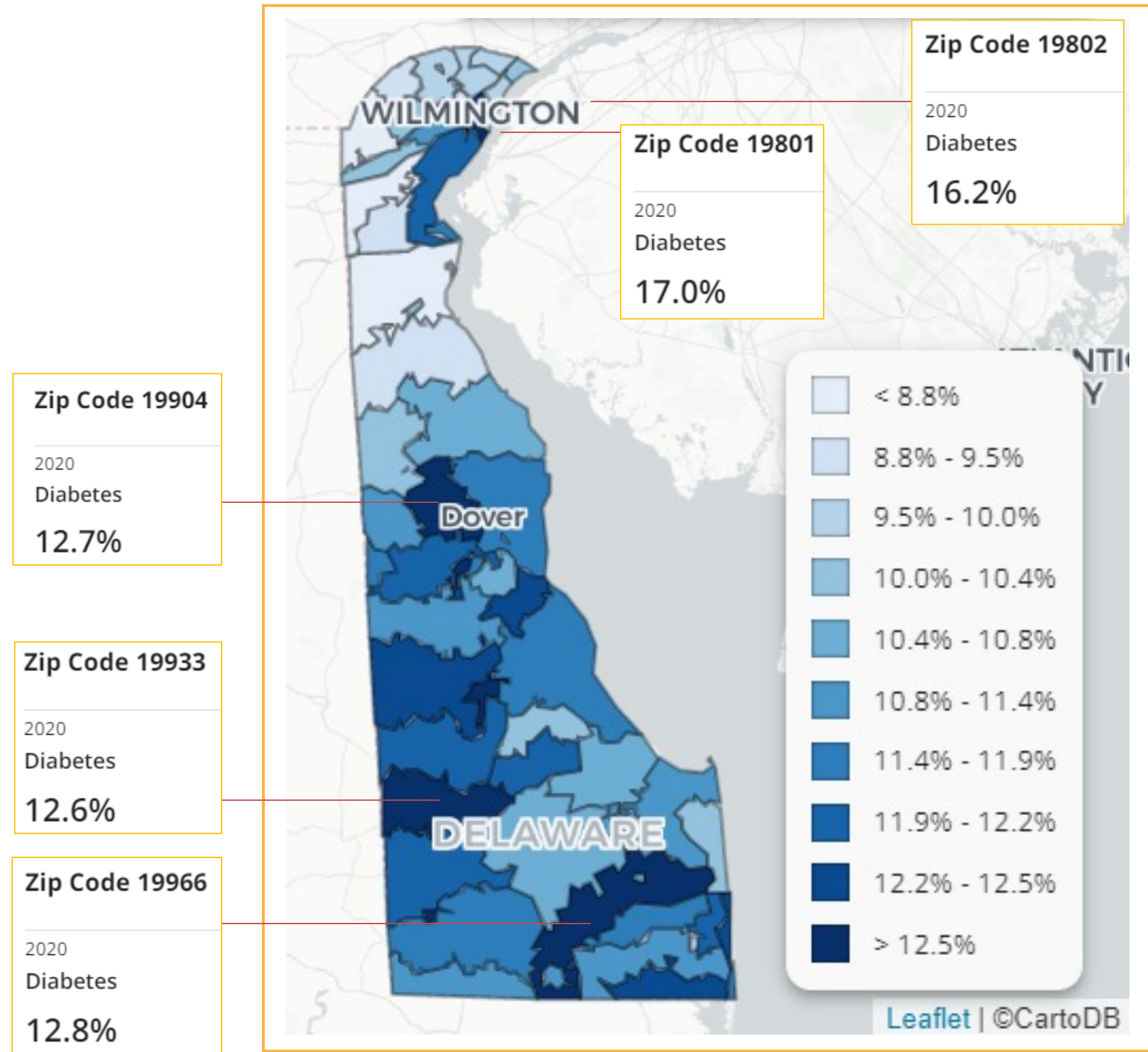
Diabetes Prevalence by Race and Ethnicity in Delaware



Source: Behavioral Risk Factor Surveillance System (BRFSS)

Note: Diabetes Prevalence is the proportion of respondents aged ≥ 18 years who report ever been told by a doctor or other health professional that they have diabetes other than diabetes during pregnancy.

Diabetes Diagnosis Across Delaware



Geography	Median Income	High School Graduation Rate	Proportion non-white	Median Age
Delaware	\$69,110	91%	33%	41
19801	\$33,410	82%	79%	33
19802	\$47,258	93%	80%	37
19904	\$56,474	89%	43%	40
19933	\$49,383	81%	23%	38
19966	\$61,604	90%	20%	54

Source: Behavioral Risk Factor Surveillance System (BRFSS) and American Community Survey, 2020

Data Example

Diabetes in Delaware: Take-aways

- Disaggregated data allows us to better understand the factors that influence health outcomes.
- Importance of Social Determinants of Health.
- The Equity Counts Data Center is useful to determine where communities are most impacted.
- Read the *Impact of Diabetes in Delaware* report from the Delaware Department of Health for more information about the Diabetes Action Plan in Delaware.



THANKS FOR ATTENDING!

QUESTIONS?



This initiative was supported by funds made available from the Centers for Disease Control and Prevention, Center for State, Tribal, Local and Territorial Support, under National Initiative to Address COVID-19 Health Disparities Among Populations at High-Risk and Underserved, Including Racial and Ethnic Minority Populations and Rural Communities.

[uwde.org](https://www.uwde.org)

<https://myhealthycommunity.dhss.delaware.gov/>



Resources

Delaware Division of Public Health. (n.d.). Equity Counts Data Center. My Healthy Community. Retrieved February 23, 2023, from <https://myhealthycommunity.dhss.delaware.gov/portals/ecdc/locations/state>

Delaware Division of Public Health. *The Impact of Diabetes in Delaware, 2021*. Retrieved May 1, 2023, from <https://dhss.delaware.gov/dph/dpc/files/diabetesburdenreport2021.pdf>

Remington, P.L., Catlin, B.B. & Gennuso, K.P. The County Health Rankings: rationale and methods. *Popul Health Metrics* 13, 11 (2015). <https://doi.org/10.1186/s12963-015-0044-2>

U.S. Department of Health and Human Services. (n.d.). Social Determinants of Health. Social Determinants of Health - Healthy People 2030. Retrieved February 23, 2023, from <https://health.gov/healthypeople/priority-areas/social-determinants-health>